

# Symposium on the International Student Education Program 2021 – Collaboration with Indonesian Alumnus

We have been holding an international student-led symposium (ISACE) every year around March, but as in the past year, it has become difficult to hold events or domestic study tours in Corona. Therefore, we are envisioning an event focused on the international student education program itself, with a focus on faculty members. Specifically, the event is expected to include (1) regular reviews of the MEXT program, (2) reviews of the international student education programs of the majors, (3) opportunities for international students to participate in activities, and (4) reports on the activities of the international student alumni association.

**March 4, 2022,**  
13:30–16:30

**Location** Online (Zoom webinar format, all in English)

After registration, you will receive a confirmation email from Zoom regarding your participation in the webinar.

For the registration, check here. →



## PROGRAM

Moderator: Prof. Yoshihide Sekimoto, Department of Civil Engineering

**13:30-13:35 Opening Remarks** Prof. Yoshimitsu Tajima, Chair, Department of Civil Engineering

### Part 1 Current Direction of International Student Education Program

**13:35-13:50 Lecture** "Recent Status of International Student Education Program in the Department of Civil Engineering" Prof. Hironori Kato, Department of Civil Engineering

**13:50-14:00 Greetings** Yuriko Onishi, Ministry of Education, Culture, Sports, Science and Technology  
Hiroki Kasahara, Asian Development Bank  
Masayuki Ohno, Shimizu Corporation

**14:00-14:10 Short Talk** "ISACE's activities and the situation and innovations of student life in the Corona disaster"  
ISACE Representative, Zainab Farooq (Bridge and Wind Engineering Laboratory)

**14:10-14:30 Short Talk** "Short presentation of students' researches and daily life in the Corona disaster"  
(5 minutes x 4 students)  
Kishor Timsina (MEXT, Meguro Lab)  
Shi Ru Teng (SHIMIZU, Bridge and Wind Engineering Laboratory)  
Clint Chester Reyes (ADB, Coastal Engineering Laboratory)  
Alireza Tavana (UEDA, Bridge and Wind Engineering Laboratory)

**14:30-14:35 Introduction of Questionnaire Survey** Assoc. Prof. Takenori Shimozono, Department of Civil Engineering

(Break)

### Part 2 Status of International Student Education Programs from the invited lecturers

**14:45-15:00 Invited Lecture** "Advices for International Student Programs from UC Berkeley education"  
Prof. Kenichi Soga, Department of Civil and Environmental Engineering, UC Berkeley

**15:00-15:10 Short introduction about the Indonesian alumni community** Dr. Asih/Prasanti. W Sarli, Assistant Profesor, Faculty of Civil and Environmental Engineering, Bandung Institute of Technology, Indonesia (Doctor of Engineering in 2015, Bridge and Structure Engineering Laboratory)

**15:10-15:25 Invited Lecture** "Thinking about the International Student Education Program of the Department of Civil Engineering from Overseas"  
Dr. Januarti Jaya Ekaputri, Associate Professor, Faculty of Civil, Planning and Geo Engineering, Surabaya Institute of Technology, Indonesia (Doctor of Engineering in 2010, Concrete Lab)

**15:25-15:40 Invited Lecture** "Reflecting on International Student Education Programs from Working in Japanese Companies"  
Mr. Masrur Ghani, Chief Design Engineer, Shimizu Corporation (Master of Engineering in 2014, Geotechnical Lab)

**15:45-16:25 Panel Discussion** "Expectations for the International Student Education Program in the Department of Civil Engineering"  
Facilitator: Assistant Prof. Daniel del Barrio Alvarez, Department of Civil Engineering  
Panelists: Invited lecturers, ISACE representative students and Prof. Kato

**16:25-16:30 Closing Remarks** Prof. Reiko Kuwano, Executive Committee Member, Department of Civil Engineering

**16:30-17:00 Free Talk**



Prof. Kenichi Soga  
UC Berkeley



Prof. Hironori Kato  
Univ. of Tokyo



Prof. Yoshihide Sekimoto  
Univ. of Tokyo



Dr. Asih/Prasanti. W Sarli  
Bandung Institute of Technology



Assoc. Prof. Januarti Jaya Ekaputri  
Surabaya Institute of Technology



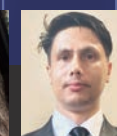
Mr. Masrur Ghani  
Shimizu Corporation



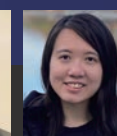
Assist. Prof. Daniel del Barrio Alvarez  
Univ. of Tokyo



Zainab Farooq  
Univ. of Tokyo



Kishor Timsina  
Univ. of Tokyo



Shi Ru Teng  
Univ. of Tokyo



Clint Chester Reyes  
Univ. of Tokyo



Alireza Tavana  
Univ. of Tokyo